

DalZone DalOmni

‘Excellent sound and impact absorbing qualities.’



Two ranges of soft yet durable roll form flooring made from recycled rubber and EDPM granules.

Colour availability

DalZone is available in 4 colourways comprising 85% coloured EDPM granules mixed with 15% fine grained recycled black rubber.

DalOmni comprises 100% EDPM granules and is available in 5 solid colours.

Finish

DalZone and DalOmni have a fine granular surface finish with an open structure. PU sealer required after installation.

Roll Size/Thickness

1250mm wide, all thicknesses.

Roll length varies by product thickness as follows:

Thickness	Roll length
4mm	30 metres
6mm	20 metres
8mm	15 metres

Available in full rolls only.*

*Dalsouple reserves the right to ship shorter rolls to make up the full amount of the order. These shorter rolls will not exceed 10% of the total order.

Thickness

DalZone
4mm, 6mm, 8mm (other thicknesses available on special order)

DalOmni
4mm (other thicknesses available on special order)

Performance

Tough
Noise absorbent
Impact absorbent
Anti-slip
Cigarette burn resistant
Easy to maintain
Suitable for use with underfloor heating
Comfortable to walk on

Uses

DalZone
Indoor surfaces and floors, including sports environments.

DalOmni
Surfaces and finishes including sports environments. Available in indoor and outdoor qualities. PU sealer not required for outdoor installations.

Slip resistance

Dalsouple rubber is designed to offer a good degree of slip resistance underfoot in dry conditions. However, it can still be slippery when wet. To minimise the risk of slippage, it is important to use effective entrance matting around all external entrances, and to use signs when cleaning takes place.

Special colours

Please note that DalZone and DalOmni are available only in the colourways shown. Special colours are available subject to a minimum quantity. Please contact us for details.

For **Colour reproduction**, **Technical**, **Standards & certification**, and **Samples & information** please see insert back.

Colour reproduction

The colour samples are designed to give you an accurate representation of colour. However, you should note that due to the manufacturing process, colours may vary slightly from batch to batch. Also, as with any type of colour sampling, the colours may be subject to slight variation over time. The folder should be renewed periodically to maintain accurate colour communication.

Splitting lines

Splitting lines are a natural feature of this product and will always occur.

Technical

For information on installation, maintenance, adhesives and accessories please visit dalsouple.com or email specs@dalsouple.com

Standards & certification

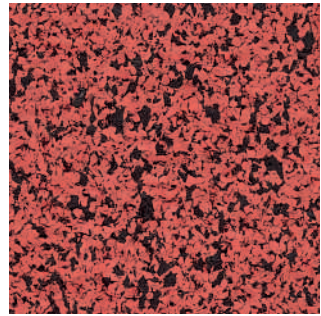
DalZone
Fire resistance:
E_{fl} standard, B_{fl} s1 on request
Footfall sound reduction:
16 dB (for 6mm)
18 dB (for 8mm)
Colour Permanence: 3
Chair-castor compatibility:
suitable for permanent use

DalOmni
Fire resistance:
E_{fl} standard, B_{fl} s1 on request

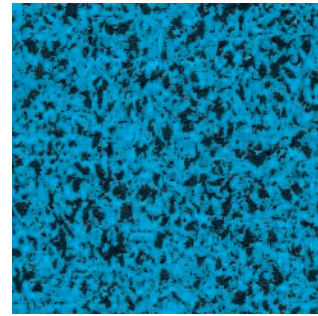
Samples & information
www.dalsouple.com

Questions?
email info@dalsouple.com
tel +44 (0) 1278 727777
fax +44 (0) 1278 727788

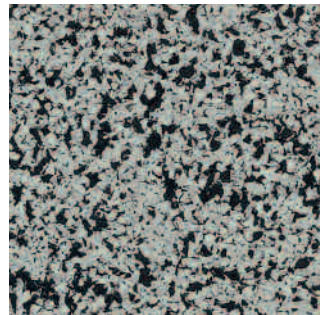
DalZone is available in 4 colourways.



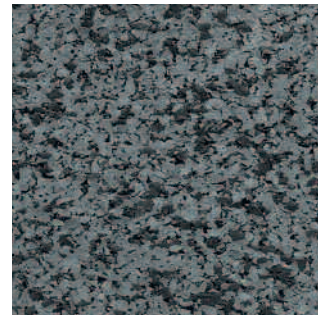
Brique



Cerulean

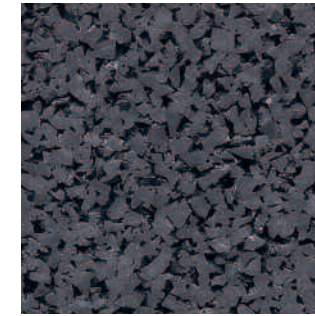


Cendre

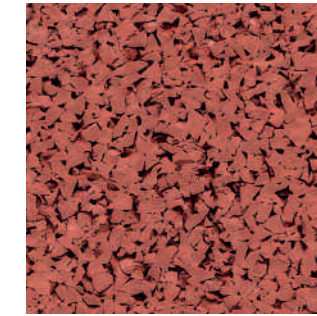


Goudron

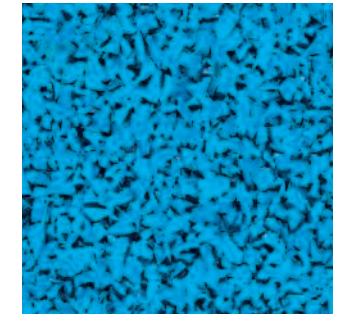
DalOmni is available in 5 colourways.



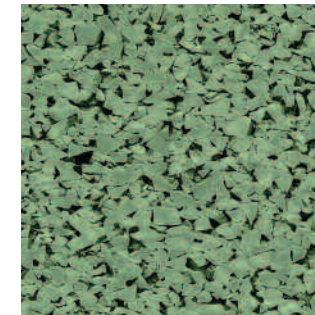
Plomb



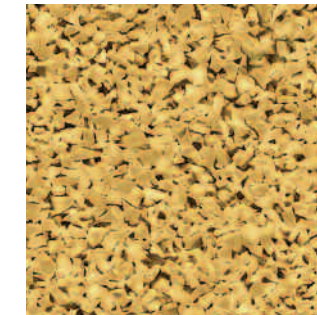
Rouille



Cyan

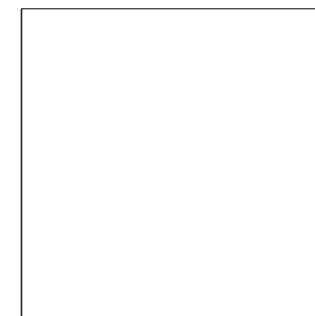


Cuivre



Argile

DalOmni outdoor quality is available in the 5 colourways shown. Outdoor applications include walkways, terraces, balconies and swimming pool surrounds. Please note that swimming pool chemicals can affect product colour over a prolonged period.



DalOmni outdoor quality

DalZone and DalOmni are available in the colours shown. Special colours are available subject to a minimum quantity. Please contact us for details.